

XEROX™ PHASER 6250 CARTRIDGE REMANUFACTURING INSTRUCTIONS



**XEROX PHASER 6250
COLOR LASER PRINTER**



TONER CARTRIDGE

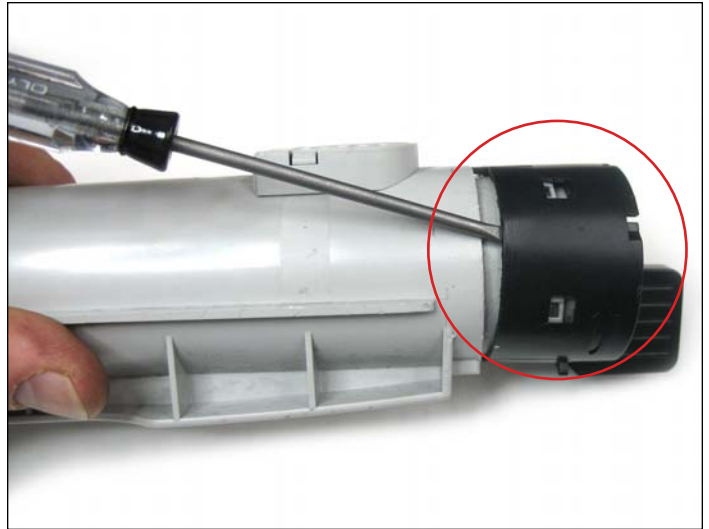
www.uninetimaging.com

USA • UK • EUROPE • AFRICA • JAPAN • CHINA • BRAZIL • MEXICO • COLOMBIA • ARGENTINA • VENEZUELA
11124 Washington Blvd., Culver City, CA, U.S.A. 90232 • Ph +1 310 280 9620 • Fx +1 310 838 7294 • techsupport@uninetimaging.com

© 2008 UniNet Imaging Inc. All Trademark names are property of their respective owners. Product brand names mentioned are intended to show compatibility only. UniNet Imaging does not warrant downloaded information. Summit Technologies is a division of UniNet Imaging Inc.



XEROX® PHASER 6250 TONER CARTRIDGE

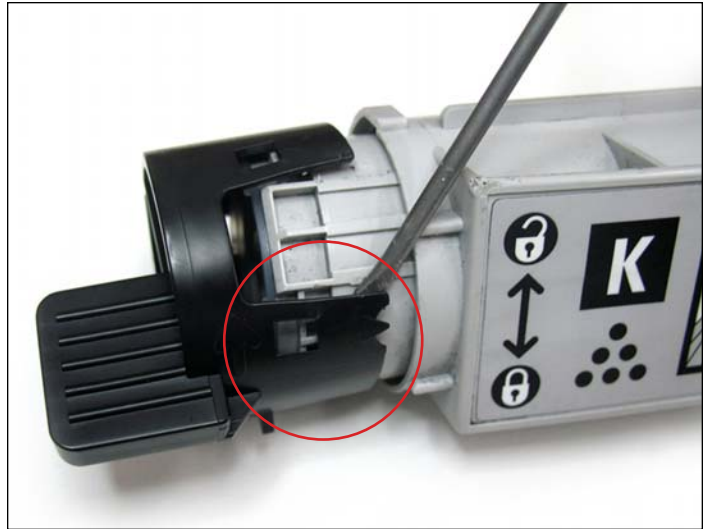


REMOVING THE GEARLESS END CAP

1. Remove the gearless end cap (shown) to access the toner fill cap. Using a small flathead screwdriver, carefully push out one side of the end cap (shown) to unlock it from the first set of tabs.



2. Rotate the cartridge and disengage the third tab (shown) in the same manner.



3. Disengage the fourth tab as shown.

www.uninetimaging.com

USA • UK • EUROPE • AFRICA • JAPAN • CHINA • BRAZIL • MEXICO • COLOMBIA • ARGENTINA • VENEZUELA
11124 Washington Blvd., Culver City, CA, U.S.A. 90232 • Ph +1 310 280 9620 • Fx +1 310 838 7294 • techsupport@uninetimaging.com

© 2008 UniNet Imaging Inc. All Trademark names are property of their respective owners. Product brand names mentioned are intended to show compatibility only. UniNet Imaging does not warrant downloaded information. Summit Technologies is a division of UniNet Imaging Inc.



4. Carefully slide out the gearless end cap. **NOTE:** Note the original positioning (shown) for reassembly.



REMOVING THE TONER FILL PLUG



5. Carefully insert a small flathead screwdriver between the base of the toner fill plug and its housing as shown.



6. Carefully lift the toner fill plug out as shown. Be careful not to damage the plastic housing.

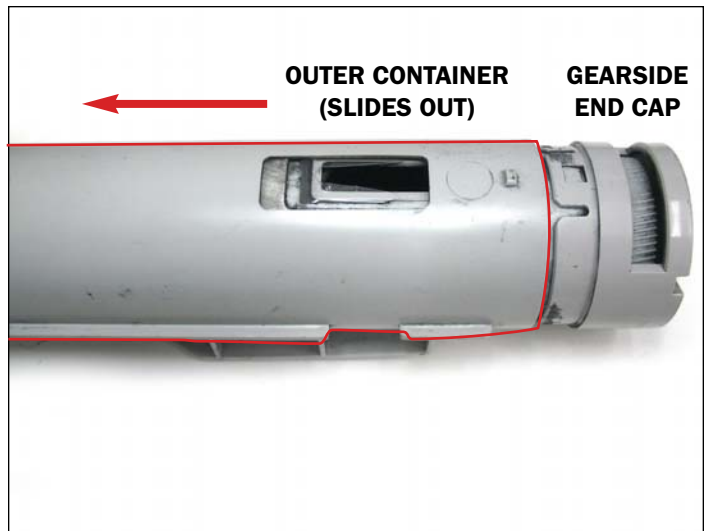
www.uninetimaging.com

USA • UK • EUROPE • AFRICA • JAPAN • CHINA • BRAZIL • MEXICO • COLOMBIA • ARGENTINA • VENEZUELA
11124 Washington Blvd., Culver City, CA, U.S.A. 90232 • Ph +1 310 280 9620 • Fx +1 310 838 7294 • techsupport@uninetimaging.com

© 2008 UniNet Imaging Inc. All Trademark names are property of their respective owners. Product brand names mentioned are intended to show compatibility only. UniNet Imaging does not warrant downloaded information. Summit Technologies is a division of UniNet Imaging Inc.



7. Toner fill plug removed. Note the original positioning of the plug for reassembly.



SEPARATING THE TONER CARTRIDGE

8. Locate the gear side of the cartridge shown. Holding the gear end cap, remove the outer jacket (highlighted) of the cartridge by sliding it out as shown.



9. Cartridge separated. Note the original positioning of the outer container. Clean thoroughly using compressed air.



ALTERNATE CLEARSEAL™ ASSEMBLY

10. First, using a pair of pliers, gently peel off the worn sealant (shown) from the toner cartridge.

www.uninetimaging.com

USA • UK • EUROPE • AFRICA • JAPAN • CHINA • BRAZIL • MEXICO • COLOMBIA • ARGENTINA • VENEZUELA
 11124 Washington Blvd., Culver City, CA, U.S.A. 90232 • Ph +1 310 280 9620 • Fx +1 310 838 7294 • techsupport@uninetimaging.com



11. Wipe the seal opening and surroundings clean using isopropyl alcohol and a lint free cloth.



INSTALLING THE CLEARSEAL™ ADHESIVE

12. Make sure that the new seal is being placed in its proper position (shown) before applying.

NOTE: Optional **UniNet Clear Seal™** universal adhesive for use in Xerox Phaser 6200, 6250, OEM BK/C/M/Y toner cartridges (UniNet part #10354).



13. Remove the adhesive backing of the **Clearseal™** and carefully place over the opening as shown. Apply pressure using your fingers to ensure a tight seal.

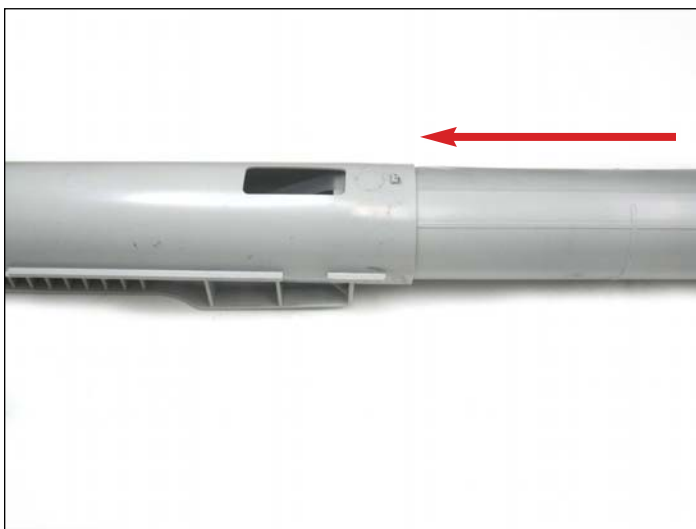


14. gently wrap the seal flap around the toner fill opening (as shown) while you prepare to insert the cartridge. This will ensure that the seal flap properly exits the opposite end of the container.

www.uninetimaging.com

USA • UK • EUROPE • AFRICA • JAPAN • CHINA • BRAZIL • MEXICO • COLOMBIA • ARGENTINA • VENEZUELA
11124 Washington Blvd., Culver City, CA, U.S.A. 90232 • Ph +1 310 280 9620 • Fx +1 310 838 7294 • techsupport@uninetimaging.com

© 2008 UniNet Imaging Inc. All Trademark names are property of their respective owners. Product brand names mentioned are intended to show compatibility only. UniNet Imaging does not warrant downloaded information. Summit Technologies is a division of UniNet Imaging Inc.



INSTALLING THE CARTRIDGE

15. Slide the cartridge into the container as indicated.

16. Continue until it is completely inserted.



17. Final result. You are now ready to fill the cartridge.



REFILLING THE TONER CARTRIDGE

18. Place the cartridge in a vertical position and refill with the appropriate amount of toner and install the fill plug.

NOTE: Additional carrier may be required for this cartridge. Consult your aftermarket reseller for more details.

www.uninetimaging.com

USA • UK • EUROPE • AFRICA • JAPAN • CHINA • BRAZIL • MEXICO • COLOMBIA • ARGENTINA • VENEZUELA

11124 Washington Blvd., Culver City, CA, U.S.A. 90232 • Ph +1 310 280 9620 • Fx +1 310 838 7294 • techsupport@uninetimaging.com



INSTALLING THE GEARLESS END CAP



19. First, wrap the remaining seal around the toner fill plug as shown.



20. Place the gearless end cap, in its original positioning, over the seal and toner fill plug as shown.

Make sure that the remaining seal flap is showing through as shown.



21. Push the end cap inward until it latches onto the four locking tab mechanisms. Make sure all four tabs are properly secured.

www.uninetimaging.com

USA • UK • EUROPE • AFRICA • JAPAN • CHINA • BRAZIL • MEXICO • COLOMBIA • ARGENTINA • VENEZUELA

11124 Washington Blvd., Culver City, CA, U.S.A. 90232 • Ph +1 310 280 9620 • Fx +1 310 838 7294 • techsupport@uninetimaging.com

© 2008 UniNet Imaging Inc. All Trademark names are property of their respective owners. Product brand names mentioned are intended to show compatibility only. UniNet Imaging does not warrant downloaded information. Summit Technologies is a division of UniNet Imaging Inc.



REPLACING THE OEM CHIP

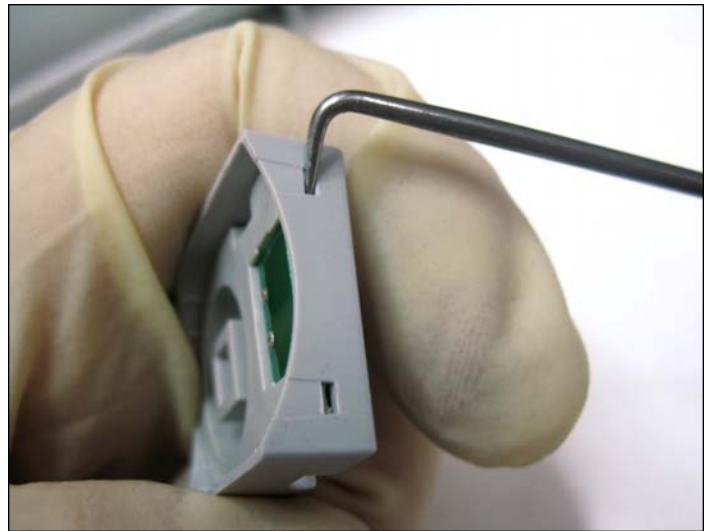
22. Locate the OEM chip housing near the gearless side of the cartridge.



23. Using a small flathead screwdriver, press down on the tabs (shown on either side) to release the chip housing.



24. Always wear latex gloves when handling chips.

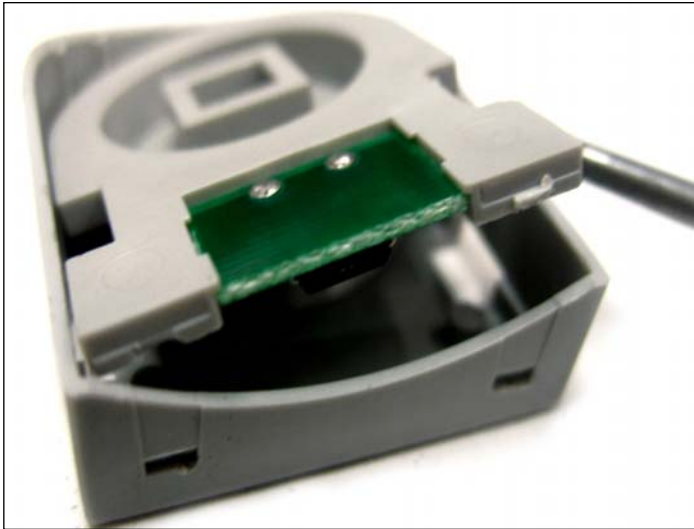


25. Unlock the actual chip from its housing by pressing the tabs (shown) using an angled hook tool.

www.uninetimaging.com

USA • UK • EUROPE • AFRICA • JAPAN • CHINA • BRAZIL • MEXICO • COLOMBIA • ARGENTINA • VENEZUELA
11124 Washington Blvd., Culver City, CA, U.S.A. 90232 • Ph +1 310 280 9620 • Fx +1 310 838 7294 • techsupport@uninetimaging.com

© 2008 UniNet Imaging Inc. All Trademark names are property of their respective owners. Product brand names mentioned are intended to show compatibility only.
UniNet Imaging does not warrant downloaded information. Summit Technologies is a division of UniNet Imaging Inc.

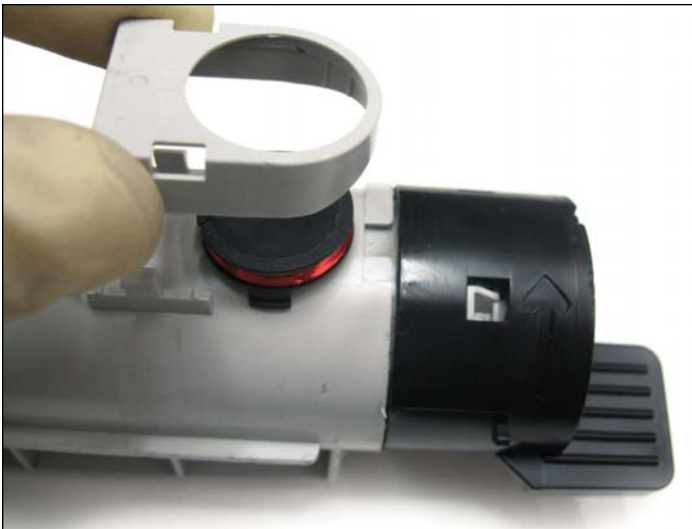


26. Carefully lift the chip from its housing.



INSTALLING THE NEW CHIP

27. Place the new contact chip on the cartridge in the manner shown.



28. Place the housing over the chip as shown.



29. Press down until the tabs lock it into place.

www.uninetimaging.com

USA • UK • EUROPE • AFRICA • JAPAN • CHINA • BRAZIL • MEXICO • COLOMBIA • ARGENTINA • VENEZUELA
11124 Washington Blvd., Culver City, CA, U.S.A. 90232 • Ph +1 310 280 9620 • Fx +1 310 838 7294 • techsupport@uninetimaging.com

© 2008 UniNet Imaging Inc. All Trademark names are property of their respective owners. Product brand names mentioned are intended to show compatibility only. UniNet Imaging does not warrant downloaded information. Summit Technologies is a division of UniNet Imaging Inc.